

## **Historic, Archive Document**

Do not assume content reflects current scientific knowledge, policies, or practices.



62,91

# CATALOGUE AND PRICE LIST FALL 1948 -- SPRING 1949



## NURSERY COMPANY

Wenatchee, Washington

(THE WENATCHEE NURSERIES)

400 Acres

Established 1906

Our FRUIT TREES are propagated from carefully selected, vigorous and healthy stock.

We are working with both the Federal and Washington State Departments of Horticulture in the selection of trees from which bud wood and seed is obtained to assure you of the very best productive healthy stock.

**GROWERS OF DEPENDABLE NURSERY STOCK  
SINCE THE YEAR 1906.**

# PLEASE Read Carefully ! !

## GENERAL INFORMATION

**Shipping Season**— Our shipping season begins about October 25th and continues until late spring. Where planting conditions are favorable, and if customers request, we can make shipments in mid-winter.

**Planting Instructions**— Planting instructions are given on the back of a shipping tag attached to every box or bale. **BE SURE TO FOLLOW THEM.**

Most failures and complaints are caused by improper planting and lack of proper care for first 30 days after planting. Do it right and have successful plantings.

### **WE PAY FREIGHT AND SHIPPING CHARGES** (Except As Noted)

We pay freight charges (except on Evergreens, Shade Trees, and other items as specified in our price list) to any shipping point within the United States on shipments that weigh 100 pounds or over.

On small shipments, \$5.00 to \$25.00, we pay express or mail charges (except Evergreens, Shade Trees, and other items noted) to points in the Pacific Northwest, and one-half the Express or Mail charges to points elsewhere in the United States. If order is for less than \$5.00, add 10% for postage and packing. Minimum charge 25 cents.

### **PRICES SUBJECT TO CHANGE WITHOUT NOTICE**

**Sales Tax**—If you live in the State of Washington, add 3 per cent Sales Tax on all Flowering Shrubs, Roses, Evergreens, Shade Trees, or other Landscape Material. No tax on Fruit Trees.

## NUMBER OF TREES OR PLANTS REQUIRED PER ACRE — HOW TO ESTIMATE

**Rule**— Divide 43,560 (the number of square feet in an acre) by the number of square feet for each plant. The result is the number of trees or plants required for an acre.

**Example**—(Square system) Trees 20 by 25 feet apart: Multiply 20 by 25, equals 500 square feet; 43,560 divided by 500, equals 87 trees per acre.

If trees are planted on the Triangular system, 15 per cent more than for the Square system will be required.

**Strawberries**— Field culture: 1 to 1½ by 2½ to 3½ feet. Garden culture: 1 to 2 feet.

### **USUAL DISTANCES FOR PLANTING**

Apple \_\_\_\_\_ 25 to 35 feet apart  
Pear \_\_\_\_\_ 20 to 35 feet apart  
Sweet Cherry \_\_\_\_\_ 25 to 40 feet apart

Sour Cherry \_\_\_\_\_ }  
Plum \_\_\_\_\_ } 16 to 24 feet  
Prune \_\_\_\_\_ } apart  
Apricot \_\_\_\_\_ }  
Peach \_\_\_\_\_ }

Grapes \_\_\_\_\_ 7 to 10 feet apart  
Currants \_\_\_\_\_ 4 to 6 feet apart  
Gooseberries \_\_\_\_\_ 4 to 6 feet apart  
Raspberries \_\_\_\_\_ 3 to 4 ft. x 5 to 7 ft.  
Blackberries \_\_\_\_\_ 3 to 4 ft. x 5 to 7 ft.

Boysenberries \_\_\_\_\_ } 7 x 7 or  
Loganberries \_\_\_\_\_ } 7 x 8 ft.  
Youngberries \_\_\_\_\_ }

## **GUARANTEE**

**WE GUARANTEE** all nursery stock sold by us to be true to name, otherwise we will replace free or refund the purchase price, at the option of the purchaser.

We guarantee all stock to be free from insect pests or plant disease.

We guarantee all nursery stock shipped by us to be of first quality and in good, live, growing condition

Our stock is carefully handled, has good vitality, and under ordinary conditions will grow.

Any complaint about failure to start growth must be made in writing, direct to our office, within **sixty** days after planting.

PRICES on APPLES, PEARS, APRICOTS, PEACHES,  
PLUMS, PRUNES, NECTARINES and QUINCES

SIZES—	Each	25 lots	50 or more
3 to 4 foot.....	\$1.10	\$ .90	\$ .75
4 to 6 foot.....	1.25	1.00	.85
5 to 7 foot.....	1.50	1.20	1.00

Extra Select Grade

Write for prices in lots of 500 or more.

TRADEMARKED and PLANT PATENTED VARIETIES  
5¢ PER TREE HIGHER THAN ABOVE

This applies to some varieties of Apples listed on Page 2, Sun Glo and Riland Apricots Page 3, and some varieties of Peaches listed on Page 5. Cherries priced on Page 4.

## APPLES

APPLES (Common Varieties)

For our better Trade-Marked and Plant-Patented varieties of Apples, see Page 3.



Varieties marked with an asterisk (\*), do well west of the Cascade mountains.

Varieties listed in order of ripening.

### SUMMER VARIETIES

- \*Crimson Beauty—Very best early apple. Ripens week earlier than Yellow Transparent — has sold for double the price; flaming red, good quality and size. TREE very hardy, vigorous, bears young, produces heavy annual crop.
- \*Yellow Transparent—Medium, clear pale yellow, waxy, tart, unexcelled for apple sauce.
- \*Lodi—An improved Yellow Transparent that bears every year.

### FALL VARIETIES

- \*Red Duchess—Bud sport of Duchess, dark red, more color than Duchess, stands up well when baked.
- \*Red Gravenstein—Large, bright red, excellent quality, originated as a bud sport from common Gravenstein.
- \*Gravenstein—Large, yellow striped red, tender, juicy, highly flavored.

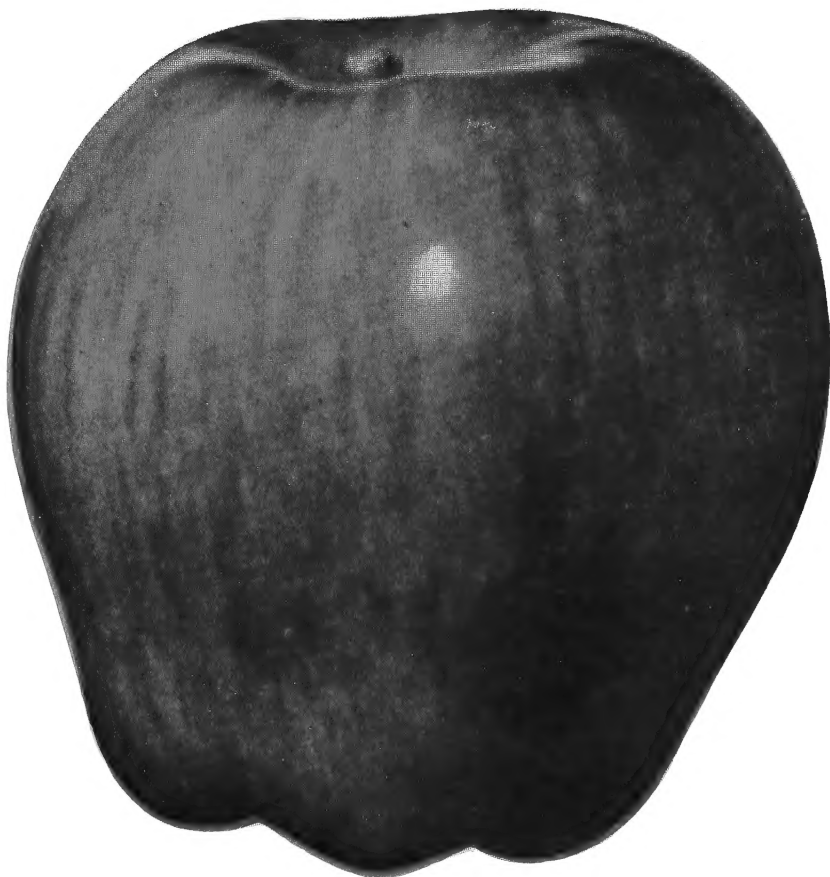
### WINTER VARIETIES

- \*Winter Banana—Large, clear waxy yellow with blush, tart flavor, good cooking.
- \*McIntosh Red—Large, bright red, striped, white flesh, excellent, very aromatic, dessert and cooking. Good pollenizer for Richared, Shotwell, common Delicious.
- Jonathan—Medium, red striped, rich flavor, unexcelled for pies, good dessert.
- Spokane Beauty—Largest apple grown. Greenish yellow, striped with red.

---

BE SURE TO FOLLOW PLANTING INSTRUCTIONS—  
Most stock that fails to grow is lost from improper planting and lack of care.

SHOTWELL (U. S. Plant Pat. #90) DELICIOUS



APPLES—(Continued)

For Prices See Page 1

Delicious—Large, red, striped, excellent flavor, fragrant aroma, fine eating, best for salads.

\*Northern Spy—Large, yellow striped with red, rich and juicy. Old favorite in north and New England.

\*King—Very large, yellow, splashed with crimson, excellent dessert, good baker.

Rome Beauty—Large, yellow, striped with red, fine, juicy, unexcelled for baking.

Chelan—Large, golden, winter apple, excellent dessert and cooking, long keeper.

Spitzenberg—Medium to large, deep red, excellent flavor, an old favorite.

Newtown Pippin (Yellow Newtown)—Medium to large, light yellow, excellent for both dessert and cooking.

Stayman Winesap—Large, striped and splashed with dark crimson, splendid quality, heavy bearer.

Winesap (Common)—Medium, dark red, good keeper and producer.

---

\*Trade Marked & Plant Patented Varieties

Price on any of these varieties 5¢ per tree higher than for regular varieties. See prices on Page 1.

\*See and O Red Rome, No. 262—Trade Mark Reg.

\*See and O Winesap—Trade Mark Reg.

Richard Delicious—Trade Mark Reg.

Shotwell Delicious—Plant Pat. No. 90

Blackjon—Trade Mark Reg.

Improved Blaxtayman, No. 201—Trade Mark Reg.

Blackmack—Trade Mark Reg.

---

FOLLOW PLANTING INSTRUCTIONS CAREFULLY

APPLES (Continued) - For Prices See Page 1

- \*Blackmack (T. M. Reg.)—Sport of McIntosh Red and a more profitable variety.
- Blackjon (T. M. Reg.) — A bud sport or mutation of Jonathan, earlier and more color, deep red.
- Richared (T. M. Reg.) Delicious— Probably the best known bud sport or mutation of the Delicious.
- \*Shotwell Delicious (U. S. Plant Pat. No. 90)— Another improved Delicious; colors earlier than any other Red Delicious. See color photo page 2.
- \*Yellow Delicious—Resembles Grimes Golden somewhat in shape, color and quality. Excellent cooker, fine dessert. Good pollenizer. 5 cents per tree extra.
- SeeandO (T. M. Reg.) Red Rome No. 262— Darker color than Rome Beauty. Nearly all color Extra Fancy grade.
- Improved Blaxtayman No. 201 (T.M.Reg.)— New all-red Stayman Winesap.
- SeeandO (T. M. Reg.) Winesap— An improved all-red Winesap.

### CRAB APPLES

- \*Transcendent—Large, red and yellow striped, good eating and cooking.
- \*Hyslop—Large, dark red, or purplish, good keeper.

## PEARS

For Prices See Page 1

Varieties marked with an asterisk (\*) do well west of the Cascade mountains in Washington and Oregon. Varieties listed in order of ripening.

- \*Bartlett—Large, clear yellow, sometimes slightly blushed, occasionally flecked with russet. Juicy, buttery, dessert, cooking and canning.

<p><b>NEW! AN ALL RED BARTLETT PEAR \$2.00 each</b></p> <p>(Patent applied for)</p>
---

- \*Flemish Beauty—Large, green to yellow, red cheeked, juicy, rich, very productive.
- Gorham—Of Bartlett type, same high quality and attractive appearance. ripens two weeks later than Bartlett, keeps month longer. Good quality, rich flavor, good canner.
- \*Beurre D'Anjou ("Anjou")—A firm pear, rather large, flesh yellowish white, rich buttery flavor, good keeper. One of the leading commercial pears.
- \*Doyenne Du Comice—Large, yellowish red, rich, juicy.
- \*Seckel—Small, brownish green, red cheek, sweet, juicy, excellent.
- Fall Russett (B. Bosc)—Large, cinnamon russet, long neck, juicy, excellent.
- \*Winter Nellis—Medium size, yellow covered with russet, very fine, good producer.
- \*Old Home—Blight resistant; good for top working to other varieties.

# APRICOTS

For Prices See Page 1. Varieties listed in order of ripening.

**Yakimene (Acme)**—A Japanese apricot. Large, early, handsome, distinctive flavor. Excellent dessert.

**Riland (U.S. Plant Pat. No. 74)**—Discovered and introduced by "C. & O". The earliest commercial apricot. Excellent shipper, good canner; brings top prices. Takes on beautiful red color, very attractive. Price on Riland apricots 5¢ per tree higher than ordinary varieties. See Page 1.

**SUN GLO**—(U. S. Plant Pat. No. 751). Our newest C. and O. introduction. Large, fine quality Apricot. Beautiful glossy finish. Fine shipper, bears heavily. Price on Sun Glo 5¢ per tree higher than ordinary varieties.— See Page 1.

**Perfection**—Very large. Ripens same time as Wenatchee. Promising new variety.

**Phelps**—Largest cot grown, ripens week ahead of Wenatchee, good shipper.

**CHINESE**—This new apricot is early bearing, a heavy producer, medium size, yellow, good quality.

**Wenatchee**—Very large: leading apricot of Wenatchee valley, Washington. Very productive— a dessert apricot. (Formerly called Wenatchee Moorpark.)

**Royal**—Medium size—dull yellow with orange cheek—good canner and dryer.

**Blenheim**—Medium size, oval, deep yellow. Good canner—productive—excellent quality.

**Tilton**—Larger than Blenheim, oval—fine flavor. Considered one of the best commercial canners.



RILAND (U.S. Plant Pat. No. 74) APRICOT



APRICOTS (Continued) - For Prices See Page 1  
 Moorpark—Large, but not as large as Wenatchee—deep yellow blushed with red. A standard variety—good canner.  
 J. L. Budd—A small Russian apricot—very hardy, will grow where other apricots fail. Delicious kernel.

## CHERRIES

Varieties listed in order of ripening.

### SWEET CHERRIES

SIZES—	Each	25 lots	50 or more
3 to 4 foot .....	\$1.25	\$1.10	\$1.00
4 to 6 foot .....	1.40	1.25	1.10
5 to 7 foot .....	1.65	1.40	1.25
} Extra Select Grade			

Black Tartarian—Large, purplish black, juicy and rich, certified pollenizer.

Royal Ann—Large, pale yellow with red check, firm juicy and sweet. In demand by canneries.

Centennial—Large, yellow, certified pollenizer.

Deacon—Black, resembles Bing, not quite as large, very resistant to cracking. Certified pollenizer.

Bing—Large, black, fine flavor, good shipper.

Black Republican—Large, shining black, good keeper and shipper, certified pollenizer.

Lambert—Large, dark purplish black, sweet, rich, fine flavor.

### SOUR CHERRIES

SIZES—	Each	25 lots	50 or more
3 ft. up .....	\$ 1.25	\$1.10	\$1.00
3 1/2 to 5 foot .....	1.40	1.25	1.10
4 to 6 foot .....	1.65	1.40	1.25
} Extra Select Grade			

Early Richmond—Medium size, dark red, acid.

May Duke—Large, red, juicy and rich.

Montmorency—Large, red, "the kind the canneries want."

Late Duke—Large, light red, late and fine.

English Morello—Large, dark red, rich, juicy, acid, good canner.

## PEACHES

For Prices See Page 1

Varieties listed in order of ripening. "F" denotes free-stone; "C" clingstone; "S.C." semi-cling.

Trade Marked & Plant Patented Varieties

Candoka - Plant Patent No. 51.

Herb Hale - Plant Patent No. 588.

Redelberta - Plant Patent No. 232.

Rio Oso Gem - Plant Patent No. 84.

Early Rochester - Plant Patent No. 351.

Price 5¢ per tree higher than regular varieties. See Page 1.

\*Mayflower, S. C.— Earliest of all peaches, medium, red, white flesh.

\*Early Rochester (U.S. Plant Patent No. 351) F. — New development from the famous Rochester; Ripens approximately three weeks earlier. Has all characteristics of Rochester in fruit, size and tree, but much earlier. Available for profitable early markets.

\*Red Haven, F.—New. Highly colored, good quality, yellow flesh, freestone. Ripens month ahead of Elberta.

PROPERLY PLANTED and CARED FOR STOCK WILL  
 MAKE SATISFACTORY GROWTH



PEACHES (Continued) - For Prices See Page 1

- \*Golden Jubilee, F.—Early, good yellow freestone.
- \*Rochester, F.—Very hardy, thrifty grower. Medium size, deep yellow and red, excellent quality. Especially good west of the Cascade mountains.
- \*Herb Hale (U. S. Plant Patent No. 588)  
F.—New, early shipping peach of outstanding quality. Originated in H. W. Donahey orchard, Yakima valley. Large size, excellent quality, yellow meated, free-stone, ripens right after Rochester.
- Valiant, F.—Resembles Elberta but more globular in shape and of better quality. Considered best canner in Ontario, Canada.
- Slappy, F.—Large, deep yellow—excellent home canner.
- Early Crawford, F.—Large yellow—good quality. A good home garden peach.
- \*Champion, F.—White-fleshed peach. Firm, sweet, delicious flavor. Tree hardy, and good bearer.
- Hale Haven, F.—Promising commercial possibilities; earliness, excellence of fruit, good shipping and bearing qualities, vigorous tree growth, resistance to low temperatures.
- \*Veteran, F.—Elberta type peach. Tree vigorous grower early production.
- Redelberta (U.S. Plant Pat, No. 232) F.— A bud sport of the Elberta. A true Elberta in all respects except that it matures about 10 days earlier and has double the red color.
- Early Elberta, F.—Also known as Improved Elberta—Large golden yellow. Excellent quality, good shipper and commercial canner.
- Elberta, F.—Very large, bright yellow—good shipper.

PROPERLY PLANTED and CARED FOR STOCK WILL  
MAKE SATISFACTORY GROWTH

PEACHES (Continued) - For Prices See Page 1

J. H. Hale, F.—Very large, golden yellow — fine shipper. The commercial peach by which all other peaches are measured for standards of excellency.

Candoka (U.S. Plant Pat. No. 51) F. — The “fuzzless” peach. Most beautiful peach grown, very large.

Late Crawford, F.—Very large, yellow with dark red cheek.

Indian Blood, C.—Large, red flesh, ideal for pickling and preserving.

Miller (Orange) Cling, C.—Large, good flavor, excellent for home canning.

Rio Oso Gem, F. (U. S. Plant Pat. No. 84)— Best late variety. Profitable commercial variety.

October Krummel, F.—Large size, deep yellow, colored carmine. One of the very latest ripening varieties.

## PRUNES

For Prices See Page 1

Asterisk (\*) denotes varieties which do well west of the Cascade mountains. Varieties listed in order of ripening.

\*Early Italian—Resembles Italian, slightly larger and sweeter. Two weeks earlier. Good commercial variety. Origin: A bud sport of the Italian.

\*Sugar—Very large, oval, dark purple, tender, sweet; particularly fine for home drying and canning. Contains almost 24 per cent sugar.

\*Hungarian—Very large, dark red, juicy and sweet. Its bright color, productiveness and shipping qualities make it profitable for home or market.

\*Double X French—Larger than Petite, just as sweet. Bud sport of Petite.

\*Italian—Medium size, oval tapering at both ends; dark purple, flesh greenish yellow; separates freely from pit; excellent for eating fresh, and the best for drying.

## PLUMS

For Prices See Page 1

Asterisk (\*) denotes varieties which do well west of the Cascade mountains. Varieties listed in order of ripening.



PROPERLY PLANTED and CARED FOR STOCK WILL  
MAKE SATISFACTORY GROWTH

## PLUMS (Continued) - For Prices See Page 1

**Beauty**—Similar in quality and appearance to Climax, two weeks earlier. Excellent pollenizer for Santa Rosa.

**Climax**—Very large, heart-shaped, deep red, good shipper.

**Shiro (Early Gold)**—Very early, large, golden yellow. good quality. A Burbank introduction.

**\*Yellow Egg**—Large, egg-shaped, yellow, good canner.

**Burbank**—Large, cherry red, mottled with yellow, sweet, good shipper.

**Maynard**—Very large, nearly round, dull red, sweet.

**Santa Rosa**—One of the largest, most beautiful of all cling plums. Dark crimson, almost round, excellent shipper.

**Simonii**—Shape and color like tomato.

**\*Yakima**—Very large, egg-shaped, red, good shipper.

**\*Peach Plum**—Very large, roundish, purple. Excellent for eating fresh.

**Wild Plum**—This is the popular old wild plum native to the Mid-West and East. Round, bright red. Famous for jams and plum butter.

**\*Damson**—Small, roundish oval, dark purple, fine canner.

**\*Imperial Gage**—Small, round, greenish yellow, good canner.

**President**—Late ripening shipping variety, popular and profitable. Fruit large, dark blue, flesh yellow.

**Duarte**—Japanese blood plum, juicy, sweet, red flesh, earlier, hardier and better than Satsuma.



DUARTE PLUM

C. &amp; O. NURSERY CO.

— Growing Dependable Stock Since 1906 —



PICKING

**SHOTWELL**  
(EST. 1888)  
**DELICIOUS**

IN A. H. McNEAL ORCHARD NEAR WENATCHEE, WASHINGTON, SEPTEMBER, 1947. THIS ORCHARD OF 7 1/2 ACRES PICKED 17,093 LOOSE BOXES. PACKOUT 12,312 BOXES (BUSHELS). A SHOTWELL DELICIOUS PACKOUT OF 1650 BOXES PER ACRE. FOR THE PAST SEVEN YEARS THIS ORCHARD HAS PACKED OUT EACH YEAR MORE THAN 1000 BOXES PER ACRE.

---



---

## NECTARINES

For Prices See Page 1

The tree of the Nectarine to all appearances can be called a peach tree. In growth, habit, and soils required it is similar to the peach. The fruit differs from the peach in that the skin is smooth, and the rich, aromatic flesh has a flavor all its own. The Nectarine is an exceedingly delicious dessert fruit.

**Boston Red**—Large size—deep yellow with bright blush, sweet.

**Quetta**—Large, yellow green, rich delightful aroma, excellent quality.

**\*Sure Crop F.**—New. From New Zealand. Firm flesh, large, pleasing flavor, freestone. White skin with attractive red coloring.

## QUINCES

For Prices See Page 1

**Orange**—Large, roundish, bright yellow, an old favorite, finest quality.

**Pineapple**—Very large, apple-shaped, flavor resembles pineapple, delightfully fragrant when fresh and delicious when cooked.

---

SEE THAT STOCK IS PROPERLY WATERED AND CULTIVATED—IT WILL PAY

EARLY ITALIAN PRUNE



NUT TREES

ALMONDS

Size—

3 to 4 foot ..... \$1.25 each Doz. Lots \$1.10 each  
 4 to 6 foot ..... \$1.50 each Doz. Lots \$1.35 each

I.X.L.—Large, soft shell.

Nonpareil—Thin “paper-shell.” Good cropper. Each variety should be planted for proper pollenization.

BUTTERNUT (White Walnut)

Size—

3 to 4 foot ..... Each \$2.75  
 4 to 6 foot ..... Each \$3.00

FILBERTS

Size—

3 to 4 foot ..... \$1.40 each Doz. Lots \$1.25 each  
 4 to 6 foot ..... \$1.65 each Doz. Lots \$1.50 each

Barcelona—Large, round, comes free from husk. Pollinize with DuChilly or Daviana.

DuChilly—Large, long nut, superior quality. Tree not so large as Barcelona, good bearer.

Daviana—Long type nut similar to DuChilly. Tree large grower. Excellent pollinizer for DuChilly and Barcelona.

Royal—New high quality, very large, round nut.

Size—

3 to 4 foot ..... Each \$2.50  
 4 to 6 foot ..... Each \$2.75

DON'T LOSE YOUR STOCK for LACK of PROPER CARE



Park Planting of Globe Locust

## ENGLISH WALNUT

**Franquette**—One of the best English Walnut varieties for the Northwest. Large, well-filled nuts.

3 to 4 foot ..... Grafted \$2.75 Not Grafted \$2.25  
 4 to 6 foot ..... Grafted \$3.00 Not Grafted \$2.50

**SeeandO**—Local walnut developed from an old hardy tree. Thin-shelled, plump. Grafted trees.

Size—

3 to 4 foot ..... Each \$3.00  
 4 to 6 foot ..... Each \$3.25

## BLACK WALNUT

**American**—Standard black walnut. Fine shade tree. Good pollenizer for English Walnuts.

Size.—

3 to 4 foot ..... Each \$2.00  
 4 to 6 foot ..... Each \$2.25

**Thomas**—Soft shell, good quality nut. Heavy bearer, Grafted trees.

Size—

3 to 4 foot ..... Each \$2.75  
 4 to 6 foot ..... Each \$3.00

## GRAPES

(Varieties listed in order of ripening.)

	Doz.-lots	25-lots	50-lots	100-lots
	Each	Each	Each	Each
All Varieties	.50	.45	.40	.35
				.30

(Except Golden Muscat and Black Monukka)

Write for Special Prices on Quantity Lots.

### AMERICAN VARIETIES (Hardy)

**Fredonia (Black)**—New early grape. Berries large, round, hang well, fine flavor.

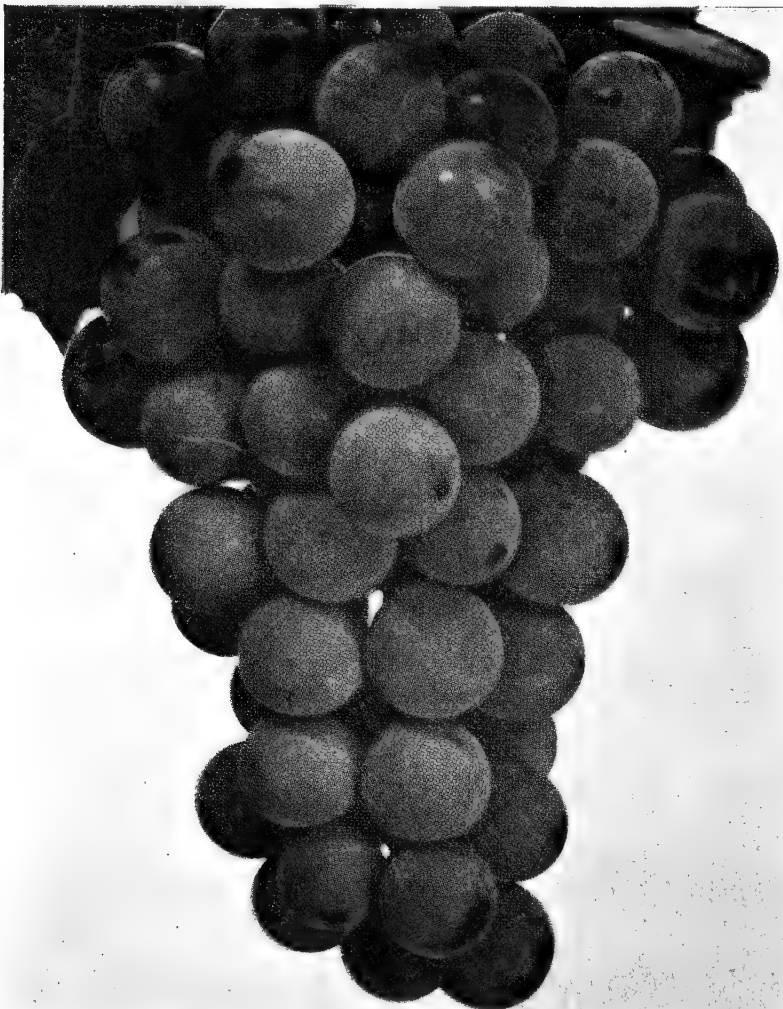
GRAPES (Continued) - For Prices See Page 11

- Portland (White)—Berries sweet, juicy, fine flavor. Productive and hardy.  
 Campbell's Early (Black)—Large, sweet, juicy, good.  
 Island Belle (Black)—Large, early, good west of the Cascade mountains.  
 Niagara (White)—Large bunches and berries, the standard white grape, called "White Concord."  
 Caco (Wine-red)—New, exceptional merit. Compact bunch, good size, hardy, thrifty grower.  
 Concord (Black)—The standard black, everywhere; very productive.  
 Agawam (Red)—Large, thick skin, sweet.  
 SPECIAL! GOLDEN MUSCAT—Beautiful, large, rich and sweet. Muscat flavor. Each .75

EUROPEAN VARIETIES (Medium Hardy)

- Csaba (Pearl of Csaba)—Hardest, north European grape, white, small seeds, excellent table grape, good wine grape. Ripens early.  
 Black Monukka—Seedless, large, very sweet. A grape everyone should have..... Each .75  
 Malaga (White)—Very large bunches, good shipper.  
 Ribier (Black)—Largest, new, very fine.  
 Black Hamburg (Black)—A great favorite, large.  
 Muscat (White)—Muscat flavor; excellent.

CONCORD GRAPE



GRAPES ARE SOMETIMES HARD TO START, BE SURE THEY ARE WELL WATERED UNTIL GROWTH STARTS



GRAPES (Continued) - For Prices See Page 11

Thompson Seedless (White)—Seedless, small, sweet, good drier.

Flame Tokay (Red)—Large, a favorite, one of the best.

Zinfandel (Black)—The most famous wine grape, enormous quantity of compact bunches, very juicy, sweet.

Alecante Bouschet (Red)—Sweet, bright red juice. A wonderful wine grape—even the leaves turn brilliant red in the fall.

## BERRIES

(Spring Delivery Only)

No home garden is complete without berry plants. Easily grown and profitable as well.

We do not guarantee berries. We grow and deliver good plants but assume no responsibility as to their growth.

## GOOSEBERRIES

(Spring Delivery Only)

(Sold in State of Washington Only)

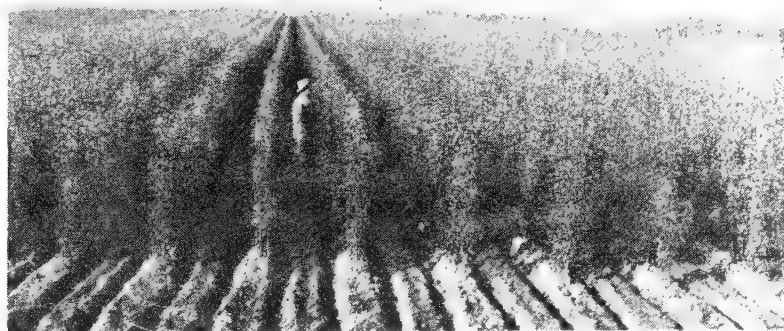
Oregon Champion—Largest, best commercial variety, free from mildew ..... each .50—dozen each .45

## CURRANTS

(Spring Delivery Only)

(Sold in State of Washington Only)

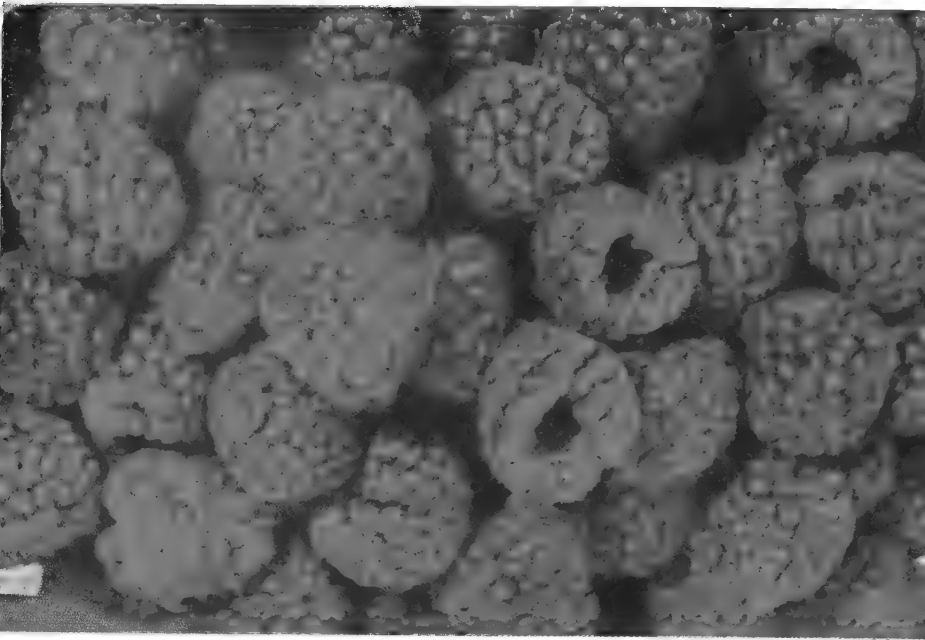
Perfection—Red, finest and largest known.  
each .50—dozen each .45



Several thousand "C&O" apple trees nearly ready for digging.

---

PROPERLY PLANTED and CARED FOR STOCK WILL  
MAKE SATISFACTORY GROWTH



## RASPBERRIES

(Spring Delivery Only)

	Doz.-lots	25-lots	50-lots
All Varieties .....	\$4.00	\$7.50	\$12.50

Cumberland (Black Cap)—One of the best and largest.

Cuthbert (Red)—Standard market variety, favorite.

Latham (Red)—New, disease resistant, very productive, large.

Indian Summer (Red)—Everbearing, very productive, large, fine quality.

New Washington—(Red) Crossed between Latham and Cuthbert.



“C & O” Budding Crew

---

BE SURE TO READ INSTRUCTIONS FOR PLANTING  
AND CARE OF STOCK

# BOYSENBERRIES and YOUNGBERRIES

(Spring Delivery Only)

	Dozen	Per 25	Per 50
Each Variety .....	\$4.50	\$8.50	\$15.00

Boysenberry—Recent introduction. Berries very large and of fine flavor. Considered by many superior to Youngberry.

Boysenberry—Thornless, same as above, but without thorns.

Youngberry—Recent introduction, very fine, cross between Loganberry and Dewberry.

Youngberry—Thornless, same as above, but without thorns.

## BLACKBERRIES

(Spring Delivery Only)

	Dozen	Per 25	Per 50
All Varieties .....	\$4.50	\$8.50	\$15.00

Lawton—Well-known market variety.

Mercereau—Hardy, upright stocky canes, heavy producer, sweet.

Thornless—No thorns, trails, train on trellis, good.

## STRAWBERRIES

(Spring Delivery Only)

No order accepted for less than 25 of a variety.

### STANDARD VARIETIES

Per 25	Per 50	Per 100	Per 1,000
\$1.00	\$1.75	\$3.00	\$25.00

Improved Oregon — Large, firm, good shipper.

Improved Marshall — Large, good canner.

Dorsett — New, early, heavy bearer, large, good shipper.

### EVERBEARING VARIETIES

Per 25	Per 50	Per 100	Per 1,000
\$1.50	\$2.50	\$4.50	\$35.00

Gem— Heavy bearer, beautiful color and shape, delicious flavor and a firm market berry.

Mastodon — Largest, heavy bearer.

	Per 25	Per 50	Per 100	Per 1,000
Rockhill	\$3.00	\$5.50	\$9.50	\$75.00

(One of the latest, improved everbearers. Does not grow many runners. Excellent flavor, large size, heavy bearer)

## MISCELLANEOUS

	Each	Dozen	50	100
Rhubarb, McDonald Red..	\$ .40	\$4.00	\$14.00	\$25.00
Horseradish, (crowns)	.20	2.00	7.00	12.50
Asparagus, Mary Washington		1.00	2.50	4.00

BE SURE TO READ INSTRUCTIONS FOR PLANTING AND CARE OF STOCK

# BLACKJON

The best ALL-RED, EARLY COLORING JONATHAN DISCOVERED AND INTRODUCED BY "C & O".

Blackjon was discovered as a "sport" limb on a Jonathan tree. This color photo shows the crop from original limb, and also crop from balance of tree. Note Blackjon is solid red,— Apples from balance of tree, picked same day, less than one quarter red. Earlier color, better color; earlier picking means added returns and profit for the owner.



## BLACKJON

97% Extra Fancy

43% C-G

Since our company was formed in the year 1906, we have grown and distributed many millions of fruit trees to every fruit growing part of the World. Our company has discovered, introduced, trade marked and patented more fruit than any other nursery in the West. Practically every fresh fruit Apricot, now in production, and marketed in the U. S. A. was introduced by the "C & O".

We specialize in fruit tree production and are always looking for improved varieties. In our packing house we have controlled temperature of 38<sup>o</sup>, keeping stock dormant from digging time in the fall until middle of June.



**COMMON JONATHAN**

**% C-Grade**

**34% Fancy**

**23% Extra Fancy**



**OFFICES AND PACKING HOUSE OF THE  
COLUMBIA & OKANOGAN (C & O) NURSERY COMPANY**

**BETTER NURSERY STOCK**

# EVERGREENS

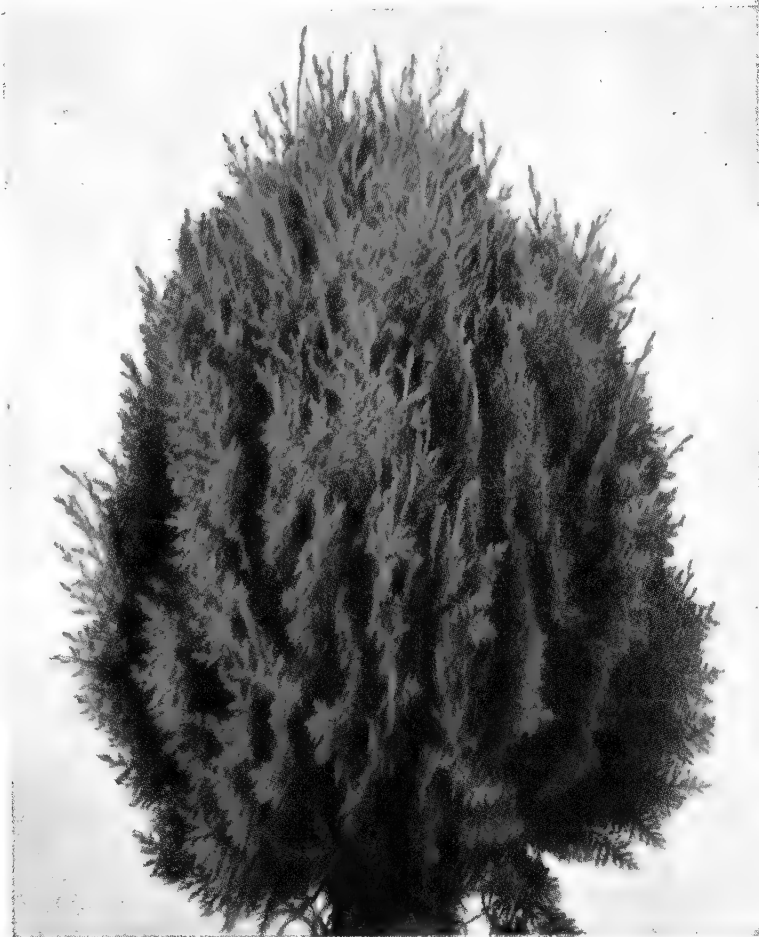
C. & O. Evergreens are well-grown, having good root systems and shapely tops. All Evergreens are balled and burlaped. Evergreens are sold f.o.b. Nursery, freight or express charges paid by the purchaser.

**ONE-HALF PURCHASE PRICE OF EVERGREENS  
PAYABLE BEFORE SHIPMENT**

Washington State Tax — Add 3% Washington State Sales Tax on all orders for landscape material for delivery within the State of Washington.

ARBORVITAE (THUJA)	Size	Each
American Arborvitae (T. Occidentalis)	2 1/2-3 ft.	\$3.50
	3-4 ft.	4.50
	4-5 ft.	6.00
American Pyramidal Arborvitae (T. Pyramidalis occidentalis)	3-4 ft.	5.00
	4-5 ft.	6.00
	5-6 ft.	8.00
	6-7 ft.	10.00
Douglas Pyramidal Arborvitae (T. spiralis douglasi pramidalis)	3-4 ft.	5.00
	4-5 ft.	6.00
	5-6 ft.	8.00
Berckmann's Dwarf Golden Arborvitae (T. aurea nana orientalis)	12-15 in.	3.25
	15-18 in.	4.50
Globe Arborvitae (T. globosa occidentalis)	12-15 in.	3.50
	15-18 in.	4.50
Beverly Arborvitae (T. Orientalis Beverlyensis)	3-4 ft.	6.50
	4-5 ft.	7.50
Andorra Juniper (J. Depressa Plumosa)	15-18 in.	4.00
	18-24 in.	5.00
Meyer Juniper (J squamata meyeri) Deep blue color, dwarf, irregular habit, very striking.	12-15 in.	3.25
	15-18 in.	4.50
Pfitzer's Chinese Juniper J chinensis pfitzeriana) Wide spreading, bushy, feathery gray green foliage. Hardy. 4-6 ft. at maturity.	18-24 in.	4.50
	24-30 in.	5.50
Savin Juniper (J sabina) Dark green, semi-spreading.	15-18 in.	3.50
	18-24 in.	4.25
Tamarix Savin Juniper (J sabina tamariscifolia) One of the finest creeping varieties, Dense, compact, blue-green.	12-15 in.	3.50
	15-18 in.	4.25
	18-24 in.	5.50
Eastern Red Cedar (J Virginiana) Hardy, rapid grower, lacy green foliage. Easily sheared.	2 1/2-3 ft.	4.50
	3-4 ft.	5.00
Pyramidal Red Cedar (J virginiana pyramidalis)	4-5 ft.	8.00

## BERCKMANN'S GOLDEN ARBORVITAE



## EVERGREENS (Continued)

	Size	Each
Colorado Green Spruce ( <i>picea pungens</i> )		
Bright green foliage, beautiful, vigorous, hardy.	{ 2-3 ft. 3-4 ft.	\$ 4.25 5.00
Colorado Blue Spruce ( <i>P. pungens glauca</i> )		
Same as Colorado Green Spruce except foliage is a blue green color.	{ 18-24 in. 2-3 ft.	5.50 7.50
Norway Spruce ( <i>P. excelsa</i> )	{ 2 1/2-3 ft. 3-4 ft. 4-5 ft. 5-6 ft.	3.75 4.50 6.00 7.50
Rapid grower, excellent for wind breaks and hedges.		
Concolor Fir ( <i>Abies Concolor</i> )		
The white fir. Large beau- tiful stately tree. Soft blue color.	{ 3-4 ft. 4-5 ft.	7.00 8.00
Mugho Pine ( <i>Pinus mugho</i> )	{ 12-15 in. 15-18 in.	4.00 4.50
The only dwarf pine. Rich green foliage, especially adapted for foundation and rock garden planting.		
PLUME Retinospora ( <i>R. Plumoso Chamaecy- paris</i> )	{ 24-30 in. 30-36 in. 3-4 ft.	4.50 5.50 6.50
Yew ( <i>Taxus</i> )		
Spreading Yew( <i>T. Cuspidata</i> )	18-24 in.	5.00
Dwarf Yew( <i>T. Cuspidata Nana</i> )	18-24 in.	5.00

## EVERGREENS (Continued)

	Size	Each
Yew (continued)	{ 18-24 in.	\$4.75
English Pyramidal (T. Bacatta)	{ 24-30 in.	5.50
	{ 30-36 in.	6.50

## Broad - Leafed EVERGREENS

Balled and Burlaped

Following Stock F.O.B. Wenatchee

One-half purchase price payable before shipment.

Berberis Juliana	12-15 in.	2.25
Cotoneaster Horizontalis	18-24 in.	3.50
Daphne Cneorum	{ Medium	2.25
	{ Large	3.50
Firethorn	{ 2 ft.	2.50
(Pyracantha Lalandi)	{ 3 ft.	3.25
Oregon Grape	{ 15-18 in.	2.50
(Mahonia)	{ 18-24 in.	3.25
Heather, Red Scotch (Calluna vulgaris rubra)	12-15 in.	2.25
Box Wood (True tree)		2.00

## SHRUBS—Balled and Burlaped

Following Shrubs F.O.B. Wenatchee

One-half purchase price payable before shipment.

Azalea, Mollis	12-15 in.	3.50
Orange-red, early spring.		
Azalea, Amoena-Coccinea	12-15 in.	4.00
Rosy Purple		
Dogwood (Cornus)	{ 2-3 ft.	4.00
Pink Flowering (C. Fla. rubra)	{ 3-4 ft.	5.00
White Flowering (C. Fla.)	3-4 ft.	4.00
Daphne Mezereum (Early Blooming red shrub)		2.25
Golden Privet		1.50
Magnolia-Stellata (Dwarf)	{ 18-24 ft.	6.00
Soulangeana	{ 2-3 ft.	7.50
Moonlight Broom		1.50
Maple, Bloodleaf	{ 2-3 ft.	5.00
(Acer palmatum atropurpureum)	{ 3-4 ft.	7.00

## Shade and Ornamental Trees

Washington State Tax: Add 3 per cent Washington State Sales Tax on all orders for landscape material for delivery within the State of Washington.

Ash	{ 6-8 ft.	2.00
Green	{ 8-10 ft.	2.50
Mountain—See Mountain Ash		
Birch	{ 5-6 ft.	1.75
European White	{ 6-8 ft.	2.25
(Betula Alba)	{ 8-10 ft.	3.00
Weeping—See Weeping Trees		
Catalpa		
Speciosa (Western Catalpa)	{ 6-8 ft.	2.25
	{ 8-10 ft.	3.00
Bungei (Umbrella Catalpa)	1-1 1/4 in.	3.00
6-7 ft. heads	1 1/4-1 1/2 in.	3.50
Cherry, Flowering	{ 3-4 ft.	2.00
(Kwanzan, Double Pink)	{ 4-5 ft.	2.50



## SHADE AND ORNAMENTAL TREES (Continued)

Crab	Size	Each
Red Vein - Has large red flowers, followed by large purplish fruit and leaves.	{ 4-5 ft. 5-6 ft.	\$1.75 2.25
Parkman - Bright rose-colored, double flowers. Dwarf tree. Very beautiful.	{ 4-5 ft. 5-6 ft.	1.75 2.25
Bechtels	{ 4-5 ft.	1.75
Double pink.	{ 5-6 ft.	2.25
Red Silver, red leaves, deep red bloom, very handsome and hardy	3-4 ft.	1.75
<b>Elm</b>		
American	{ 6-8 ft. 8-10 ft.	2.25 3.00
Siberian	{ 5-6 ft. 6-8 ft. 8-10 ft. 10-12 ft.	1.50 2.00 2.50 3.00
Golden Chain	{ 5-6 ft.	3.00
Laburnum Vossi	{ 6-8 ft.	3.75
Ginkgo Biloba (Maidenhair)	{ 4-5 ft. 6-8 ft.	2.50 3.00
Hawthorne, Paul's Scarlet	{ 5-6 ft. 6-8 ft.	2.50 3.25
<b>Linden</b>		
American (Tilia Americana)	{ 6-8 ft. 8-10 ft.	2.50 3.00



PAUL'S SCARLET HAWTHORNE

## SHADE AND ORNAMENTAL TREES (Continued)

	Size	Each
Locust		
Black	{ 5-6 ft. 6-8 ft. 8-10 ft.	\$1.50 2.00 2.50
Globe, 6-7 ft. heads	{ 1-1 1/4 in. 1 1/4-2 in. 2-3 in.	3.00 3.50 4.00
Pink Flowering	{ 4-5 ft. 5-6 ft. 6-8 ft.	2.00 2.25 2.75
Maple		
Norway (Acer Platanoides)	{ 5-6 ft. 6-8 ft. 8-10 ft. 10-12 ft. Cal. 1 1/2-2in.	1.50 2.00 2.50 3.00 3.50
Schwedleri (A. Schwedleri)	{ 6-8 ft. 8-10 ft.	2.50 3.00
Silver (or Soft) (A. dasycarpum)	{ 6-8 ft. 8-10 ft.	2.00 2.50
Sugar (A. Saccharum)	{ 5-6 ft. 6-8 ft.	2.00 2.50
Japanese Bloodleaf - See "Balled Shrubs" Page 20.		
Mountain Ash, European (sorbus aucuparia)	{ 5-6 ft. 6-8 ft.	2.00 2.50
Mulberry		
Russian (Morus Tartarica)	{ 6-8 ft. 8-10 ft.	2.00 2.50
American	6-8 ft.	2.00
FLOWERING PEACH		
Camelliflora peach	{ 3-4 ft.	1.50
Bright pink, double flowers. Choice.	{ 4-5 ft.	1.75
Burbank Red Peach	{ 3-4 ft.	1.50
A choice, double, red-flowered.	{ 4-5 ft.	1.75
Burbank White Peach	4-5 ft.	1.50
An attractive, double, white- flowered variety.		
FLOWERING PLUM		
Prunus Cistena (Purple Leaf Plum)	{ 3-4 ft. 4-6 ft.	1.50 2.00
Blossoms semi-double, rich, soft pink. Foliage deep red to purple.		
P. Triloba (Dwarf Flowering Plum)	{ 2-3 ft. 3-4 ft.	1.25 1.50
Beautiful dwarf tree or shrub. Rich, rose-pink, double flow- ers. Known as Rose Tree of China.		
Poplar		
Bolleana	{ 6-8 ft. 8-10 ft.	1.75 2.25



PURPLE LEAF PLUM

(*Prunus Cistena*)

SHADE AND ORNAMENTAL TREES (Continued)

Poplar (continued)	Size	Each
Carolina	{ 6-8 ft.	\$1.50
	{ 8-10 ft.	2.00
Lombardy	{ 6-8 ft.	1.50
	{ 8-10 ft.	2.00
Red Bud ( <i>Cercis canadensis</i> )	4-5 ft.	2.00
Sycamore ( <i>Platanus</i> or Plane Tree)		
American ( <i>P. occidentalis</i> )	{ 6-8 ft.	2.50
	{ 8-10 ft.	3.00
Tulip Tree ( <i>Liriodendron</i> )	5-6 ft.	2.50
Willow		
Golden	{ 6-8 ft.	1.75
Golden yellow twigs and bark.	{ 8-10 ft.	2.25
Weeping - See Weeping Trees.		

WEEPING TREES

Birch, Cut-leaf Weeping ( <i>Betula laciniata</i> )	{ 5-6 ft.	3.00
	{ 6-8 ft.	3.75
	{ 8-10 ft.	4.50
Willow		
Niobe Golden Weeping	6-8 ft.	2.50
Golden bark and twigs.		
Wisconsin Weeping	{ 5-6 ft.	2.00
	{ 6-8 ft.	2.50
Long, drooping, graceful branches. Fast Grower.		

# FLOWERING SHRUBS

Our shrubs are Number One Grade and at least two years old. They have been transplanted and have excellent root systems and symmetrical tops. Most of this stock will bloom the first year planted.

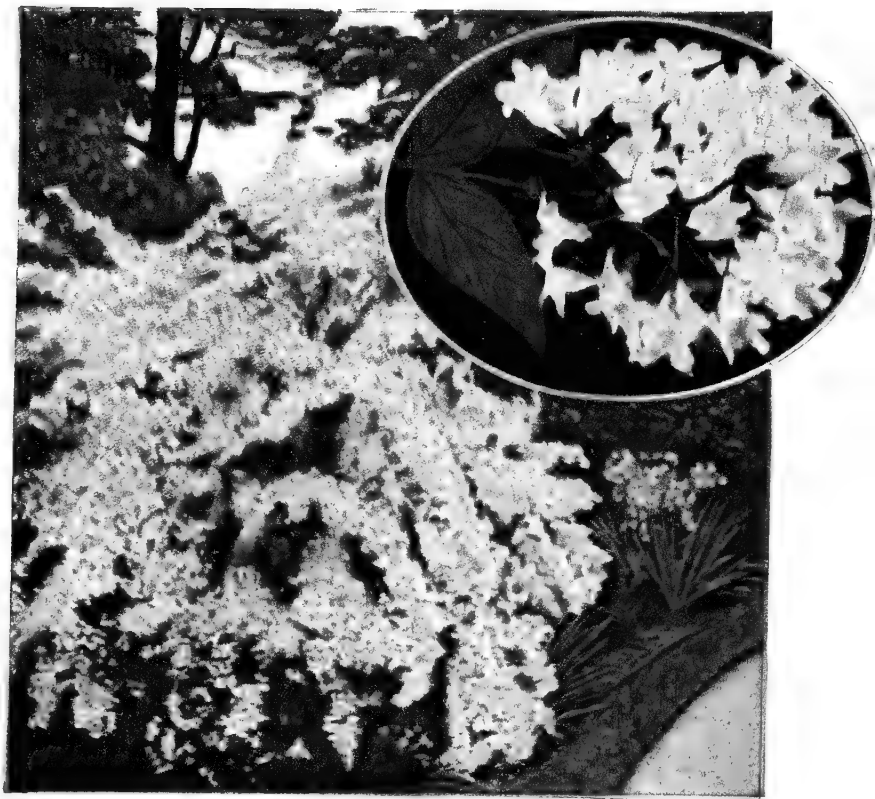
	Each
Althea, Red, White, or Purple.....	\$ 1.25
Azalea Mollis—See “Shrubs—Balled & Burlaped.”	
Almond, Flowering, Pink, White .....	1.25
Barberry, Thunbergii, Japanese Green.....	1.00
Red Leaved.....	1.25
Beauty Bush—(Kolkwitzia).....	1.25
Slender, graceful arching branches covered with pink flowers, late spring.	
Butterfly Bush—(Buddleia)	
Charming, pink.....	1.25
Ile de France, purple.....	1.25
Dogwood—(Cornus)	
*Florida, White Flowers (Small Tree).....	
*Florida Rubra, Pink Flowers (Small Tree)	
*For above two varieties see “Shrubs Balled and Burlaped.” – Page 20.	
Deutzia—	
Gracillis, White flowers, May.....	1.25
Lemoine. White flowers, May, June.....	1.25
Pride of Rochester, White, tinged pink, June.....	1.25
Forsythia—	
Fortunei—Upright, bright yellow flowers...	1.25
Suspensa Weeping Forsythia, yellow flowers.	1.25
Heather—See Red Scotch Heather under “Shrubs”— Balled and Burlaped”—Page 20.	
Honeysuckle (Lonicera), Upright Bush.	
Tartarian, Pink, Red.....	1.25
Hydrangea—	
Arborescens. White, June-July.....	1.25
Paniculata Grandiflora (P.G.).....	1.25
White, bronze-pink. August, September.	
Kerria, Japonica. Yellow, double flowers.....	1.25
Lilacs (Syringa)—	
Purple, Common (vulgaris). Purple flowers	1.25
White, Common (vulgaris). White flowers....	1.25
Persian (persica). Large spikes.....	1.50
Purple-lilac flowers.	

BE SURE TO READ INSTRUCTIONS FOR PLANTING  
AND CARE OF STOCK

FLOWERING SHRUBS (Continued)

	Each
<b>Budded Lilacs—</b>	
Charles Joly. Double. Dark violet .....	\$2.00
Souv. De Ludwig Spaeth. Single. Purplish red.....	2.00
Katherine Havemeyer. Double. Mauve pink..	2.00
Miss Ellen Willmott, best double white....	2.00
President Lincoln. Single. Clear blue.....	2.00
<b>Mock Orange—(Philadelphus)</b>	
Lemoine. White.....	1.25
Virginal White, very fragrant.....	1.25
<b>Quince, Flowering (Cydonia Japonica)—</b>	
Japanese Deep red, early spring.....	1.25
Maulei, Dwarf, Orange-red. Low growing..	1.25
<b>Snowball— (See Viburnum plicatum.)</b>	
<b>Spirea—</b>	
Anthony Waterer, Low Grower, red flowers.....	1.00
Blue Mist, lacy blue flowers.....	1.35
Froebeli—Similar to S. Anthony Waterer, though taller.....	1.25
Prunifolia (Bridalwreath). White flowers..	1.25
Thunbergi, Feathery foliage, white flowers.	1.00
Van Houttei. White. An old favorite.....	1.00
<b>Tamarix—</b>	
African. Drooping, feathery foliage.....	1.25
Dusky pink flowers.	
Hispida. Upright, bluish-green foliage.....	1.25
Bright pink flowers.	

BEAUTY BUSH



FLOWERING SHRUBS (Continued)

Each

Viburnum—

Carlesi (balled and burlaped).....	\$3.00
A new attractive shrub, flowers delicate pink, fragrant.	
Plicatum (Japanese Snow ball).....	1.50
Showy white flowers in balls, June. Handsome foliage, autumn coloring.	
Tomentosum. Flat heads, white flowers, June.....	1.50

Weigela—

Eva Rathke. Deep red, low growing .....	1.25
Rosea. Very fine, deep rose.....	1.25
Bristol Ruby. New red, very fine.....	1.50

HEDGE PLANTS

	25	50	100
Barberry, Thunbergi.....	10.00	17.50	30.00
Makes attractive hedge, 3-4 ft. Does not require trimming. Small, sharp thorns make good barrier.			
Barberry, Red.....	12.50	22.50	40.00
Privet, English—			
18 to 24 in. ....	8.00	15.00	25.00
2 to 3 ft. ....	10.00	17.50	32.50
3 to 4 ft. ....	12.50	22.50	40.00
Privet, Lodense—			
6 to 10 in. ....	10.00	17.50	30.00
12 to 15 in. ....	12.50	22.50	40.00
Dwarf, compact grower, excellent for low-growing hedges, borders.			
Spirea, Van Houttei.....	10.00	17.50	32.50

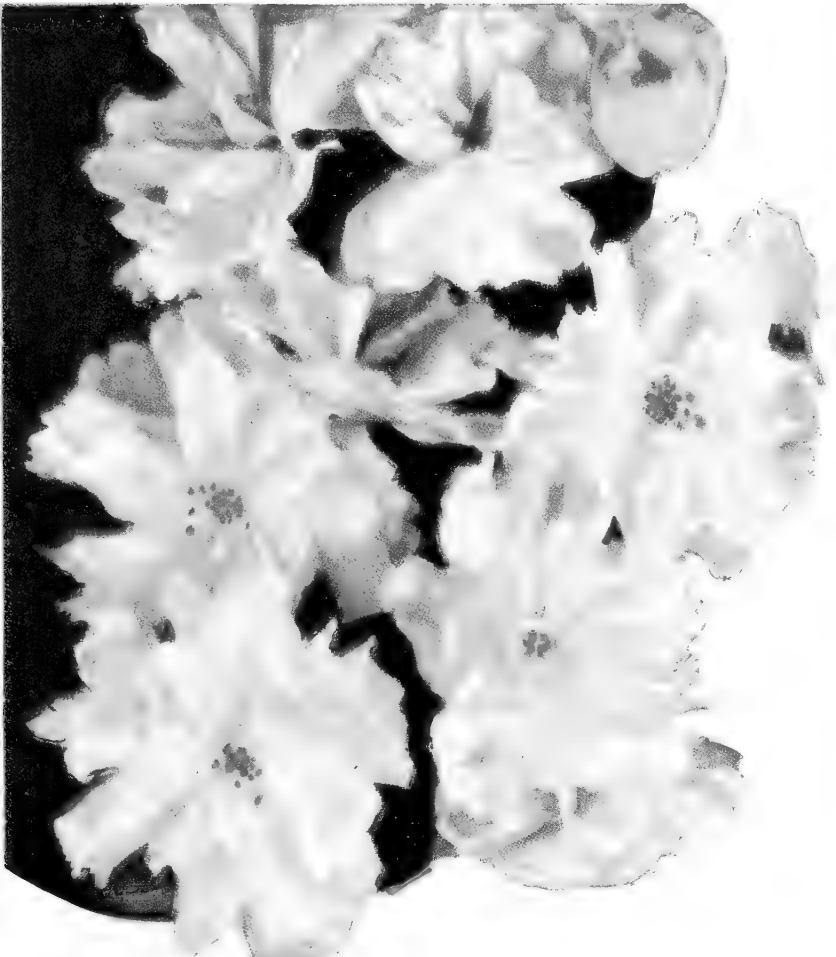
VINES AND CREEPERS

Our vines and creepers are all two or more years of age, No. 1 grade.

Honeysuckle

Scarlet Trumpet, bright scarlet.....	1.00
Hall's Japan, cream and white, very fragrant.....	1.00
Gold Flame, new, rare, very showy.....	1.25

FLOWERING SHRUBS (Continued)



KWANZAN FLOWERING CHERRY

	Each
Ivy, Boston, green leaves, clings to wood or stone.....	\$ .85
Engleman's Creeper, green leaves, very hardy.....	.85
Virginia Creeper, green leaves, red in fall...	.85
Trumpet Vine (Bignonia), orange-red flowers.	1.00
Wisteria (Sinensis) Purple.....	1.25

## LET US HELP YOU

### PLAN TO PLANT *a Beautiful Garden!*

Whether your home be small or large . . . a selection of Trees, Flowering Shrubs, Evergreens, Roses and Vines will bring beauty and enjoyment



**Landscaping increases property values, too!**

**We will GLADLY help you. WRITE US!**

**BE SURE TO READ INSTRUCTIONS FOR PLANTING AND CARE OF STOCK**

## ROSES

## HYBRID TEA BUSH ROSES

LARGE, THRIFTY, TWO-YEAR OLD PLANTS  
WILL BLOOM THIS YEAR

Ami Quinard—Beautiful velvet blackish red.....	\$1.00
Autumn—Rich burnt Orange, yellow and red.....	1.00
Betty Uprichard—Large two-tone pink. Profuse.....	1.00
Charlotte Armstrong—(Plant Patent) Long slender carmine buds, brilliant cerise blooms.....	1.50
Christopher Stone—One of the best reds. Glowing brilliant crimson-scarlet with deeper shadings, long buds, good foliage.....	1.25
Countess Vandal—(Plant Patent) Long pointed buds. Carmine pink, shaded soft pink and gold.....	1.35
Crimson Glory—(Plant Patent) An outstanding free and fragrant bloomer. Vivid crimson red.....	1.50
Dainty Bess—Single shell pink with vivid wine colored stamens.....	1.00
Duquesa de Penaranda—Blend of apricot-orange and pink.....	1.00
Eclipse—(Plant Patent) Long streamlined bud. A rich, superb yellow rose.....	1.35
E. G. Hill—Large, double, lasting, deep scarlet.....	1.00
Etoile de Hollande—Dark, velvety, red, large, fragrant, profuse.....	1.00
Forty-Niner, (Plant Patent) All American winner for 1949. Brilliant two-tone Flame red and clear yellow reverse, very striking.....	2.50
Feu Joseph Looymans—Shapely long buds, Apricot yellow.....	1.00
Golden Dawn—Large, fragrant, sunflower yellow.....	1.00
Hector Deane—(Plant Patent) Unusual vibrant red. Gorgeous pointed buds. Very fragrant. Abundant bloomer.....	1.50
K. A. Victoria—Exotic pure white blooms.....	1.00
Los Angeles—Glorious rich flame pink.....	1.00
Matador—(Plant Patent) Scarlet-crimson with darker silky sheen.....	1.50
Mirandy—(Plant Patent) All American winner for 1945. Gorgeous fragrant, deep red with black shadings....	1.50
Mme. Edouard Herriot—Coral red to shrimp pink. Profuse.....	1.00
Mme. Jules Bouche—Very fine blush white, fragrant, free grower.....	1.00
Mrs. E. P. Thom—Pure yellow, a superb rose.....	1.00
Mrs. Sam McGredy—Long coppery buds. Copper-orange flushed with red.....	1.25
McGredy's Ivory—Creamy white with light yellow base. Long pointed buds.....	1.25
McGredy's Scarlet—Long lasting, large, double, rose-red blooms. One of the best.....	1.00
New Yorker, (Plant Patent) Huge deep red blooms, very fragrant. Described as "The best red Rose of all time.".....	2.50
Nocturne, (Plant Patent) All American Winner for 1948. Dark red, very large, perfect buds.....	2.00
Peace—(Plant Patent) All American winner for 1946. Large golden yellow petals edged with pink.....	2.00
President Hoover—Combines shades of cerise-pink, scarlet and yellow.....	1.00
Picture, Very Double, clear rose pink, vigorous dark, glossy foliage.....	1.00
Rubaiyat—(Plant Patent) All American winner for 1947. Rich crimson to rose red. Long shapely buds.....	1.50
Saturnia—(Plant Patent) Brilliant cardinal red with salmon-yellow reverse.....	1.50

BE SURE TO READ INSTRUCTIONS FOR PLANTING  
AND CARE OF STOCK





**CHARLOTTE ARMSTRONG**

(Plant Patent No. 455)

---

---

**ROSE PLANTING INSTRUCTIONS**

Cut bushes back to about 8 inches. Plant at correct depth, being careful to spread out roots. Mound earth over plant to tips of canes. Keep earth thoroughly soaked until buds start to grow. Wash earth away gradually with hose until original ground level is reached. Your rose is on its way.

## ROSE LIST (Continued)

Signora—(Plant Patent) Long buds of warm, burnt sienna, opening to a lighter hue toward mandarin.....	\$1.50
Sonata—(Plant Patent) Long pointed buds of intense cochineal-red open to flowers of deep vivid pink. Fine cut flower.....	1.50
Talisman—A tri-color masterpiece, golden yellow, scarlet and orange.....	1.00
Tallyho—(Plant Patent) All American winner for 1949. Two-tone. Unique rose pink, outer petals rich crimson. Long beautiful buds, spicy fragrance.....	2.50

FLORIBUNDA and POLYANTHA ROSES  
A Wealth of Bloom All Season

Ann Poulsen—(Plant Patent) Deep pink, ruffly, semi-double blooms. Very floriferous.....	1.25
Donald Prior—(Plant Patent) Large free-flowering, semi-double, bright scarlet.....	1.25
Floradora—Scarlet red, very double, foilage, leathery and glossy. An American Award winner.....	1.25
Ideal. Dark velvety crimson, fragrant, prolific, deep green foliage.....	1.00
Improved LaFayette, deep vivid crimson. Bushy.....	1.00
Mme. Cecil Brunner—Exquisit tiny pink buds. The Sweetheart rose.....	1.00
Pinocchio—(Plant Patent) Salmon buds open to pink blooms shaded deeper at edges.....	1.50
Pink Bountiful—(Plant Patent) Deep reddish pink buds, fragrant. Deep leathery foliage, vigorous.....	1.50
World's Fair—(Plant Patent) Similar to Donald Prior but larger and darker red. Very fine.....	1.25

## CLIMBING ROSES

Blaze—(Plant Patent) Acclaimed the only hardy, ever-blooming Scarlet climber.....	1.50
Break O'Day—(Plant Patent) Large apricot blooms, vigorous, everblooming.....	2.00
Countess of Stradbroke. Dark glowing crimson, very fragrant, everblooming. Rich green foliage.....	1.25
Dainty Bess—Everblooming climbing sport of the bush variety.....	1.25
Dr. J. H. Nicholas—(Plant Patent) Large deep rose pink, fragrant everblooming.....	1.50
Etoile de Hollande—Climbing sport of the bush variety.	1.00
Mrs. E. P. Thom—Climbing sport of the bush variety.	1.00
New Dawn—(Plant Patent) Attractive light pink, ever-blooming.....	1.50
Orange Everglow—(Plant Patent) Very fragrant, large, orange-buff everbloomer.....	2.00
Paul's Lemon Pillar—Creamy buds. Beautiful large white blooms.....	1.00
Paul's Scarlet Cl.—Vivid scarlet flowers provide a wealth of bloom.....	1.00
President Hoover—Climbing sport of the bush variety.	1.00
Talisman—Climbing sport of the bush variety.....	1.00

## SHRUB ROSE

Austrian Copper—Coppery red and yellow. A Brilliant shrub.....	1.00
--	------

BE SURE TO READ INSTRUCTIONS FOR PLANTING  
AND CARE OF STOCK



TALISMAN

ECLIPSE  
(Plant Patent No. 172)



## PEONIES

(Fall Delivery Only)

Peonies thrive in any good garden soil where sunlight is plentiful. Once established, they flower year after year with increasing quantity and quality of gorgeous blossoms. This list shows some of the most highly rated varieties according to the ratings of the American Peony Society. Peonies should be planted with the eye 2 inches deep.

Price Each

### WHITE

Festiva Maxima. 9.3. Large white flecked with crimson.....	\$1.00
Duchess de Nemours. 8.1. White with sulphur yellow center.....	1.00
Le Cygne. 9.9 (The Swan) Pure white. Highest rated peony.....	2.00
Duke of Wellington. 7.8. Tall creamy white.....	1.00

### PINK

Floral Treasure. 7.5. Rich pink and salmon .....	1.00
Mons. Jules Elie. 9.2. Deep shell pink with silvery reflex.....	1.25
Therese. 9.8. Large, rich satin pink shading to lilac in center.....	1.50
LaFrance. 9.0. Large clear bright pink.....	1.00
Martha Bulloch. 9.1. Soft rose pink shading to silvery shell pink on outer petals. ....	1.50
Tourangelle. 9.4. Pearl overlaid with shades of salmon pink.....	1.25

### RED

Karl Rosenfield. 8.8. Rich red. Excellent cut flower.....	1.25
Longfellow. 9.0. Pure bright crimson. Very fine.....	1.25
Rubra Superba. 8.4. Brilliant deep crimson.....	1.00
Philippe Rivoire. 9.2. Bright, rich, dark crimson. Highest rated red.....	1.50

### MISC

Primevere. 8.6. Sulphur yellow, fragrant. Fine for cutting.....	1.75
Philomele. 7.7. The gypsy colored peony. Pink and yellow bands of color.....	1.00

---



---

**BE SURE TO READ INSTRUCTIONS FOR PLANTING  
AND CARE OF STOCK**

---



---

REMEMBER: "IT'S NOT A HOME UNTIL IT'S PLANTED." INCREASE YOUR ENJOYMENT OF YOUR HOME, ALSO THE ACTUAL VALUE OF YOUR PROPERTY WITH PROPERLY PLANTED TREES, SHRUBS AND OTHER ORNAMENTALS.

# BETTER VARIETIES PAY!

Among some of our introductions during the past half-century of growing and distributing nursery stock for planters everywhere are the following:

## .. APPLES ..

**RICHARED**  
The DELICIOUS *supreme*

**"SeeAndO"**  
WINE SAP

**"SeeAndO"**  
RED ROME No. 262

**BLACKJON**  
PAT. APP. FOR TRADE MARK REG.

IMPROVED  
**BLAXTAYMAN**  
TRADE MARK REG.  
Number 201

**SHOTWELL**  
(U.S. PLANT PAT. 112,900)  
DELICIOUS

**BLACKMACK**

Dear Grower:

Herewith our current catalog price list. If you are a "C & O" customer, you know the kind of stock we grow; if not, we hope you will be and we assure you we will do our best to supply you with stock that will please, if favored with your order.

In addition to the patented and trade-marked varieties shown in this circular, we grow hundreds of other fruit trees, evergreens, shrubs, berries, vines, roses, etc., etc., as shown in the catalog. Our stock is all northern grown, hardy, thrifty, full of life.

Demand is heavy. We suggest that you place your order early.

Very truly

COLUMBIA & OKANOGAN NURSERY CO.  
"The Wenatchee Nurseries"

WDP vm

★ ★ ★

If we can help you with your Planting Problems, please feel free to call, write or phone.

★ ★ ★

## .. PEACHES ..

**REDELBERTA**  
U.S. PAT. 112,414

**CANDOKA**  
U.S. PLANT PAT. 112,414

**EARLY ROCHESTER**  
U.S. PLANT PAT. No. 351

**HERB HALE**  
U.S. PLANT PAT. No. 588

## .. APRICOTS ..

**RILAND**  
U.S. PLANT PAT. 112,414

**SUN GLO**  
U. S. Plant Patent No. 751

400 Acres Devoted to Growing  
Nursery Stock and Orchards

**Columbia & Okanogan**

**NURSERY  
COMPANY**

ESTABLISHED  
IN 1906

"The Wenatchee Nurseries"

Wenatchee, Washington

WASHINGTON'S OLDEST...LARGEST NURSERY

From Coast to Coast It's "C & O" - Plant 'Em - Watch 'Em Grow!

BEER

Among some of our  
half-century of growth  
stock for

...

...

...

...

...

...

...

...

Columbia & Company

The W  
Wenatch

# GARDEN ACCESSORIES

(Prices F. O. B. Wenatchee)

## VIGORO FERTILIZER

—Clean, Odorless, Economical.

100-lb. bag .....	\$5.00
50-lb. bag .....	2.75
25-lb. bag .....	1.60
10-lb. bag .....	.90
5-lb. bag .....	.50
1-lb. bag .....	.15

## PEAT MOSS

Large bale .....	\$4.50
------------------	--------

## LAWN SEED

C. & O. Lawn Mixture, per lb. ....	\$1.25
Kentucky Blue .....	.85
Red Top .....	.60
White Lawn Clover .....	1.60

# GARDEN SPRAYS



## “EXTRAX” GARDEN SPRAY

Kills every type of insect from Aphids to Zimbs. Directions for use on all containers.

4 fluid oz. bottle .....	\$1.00
--------------------------	--------

(Makes 25 to 50 gals. of diluted spray.)

## MILDEW SPRAY

Greenol Fungicide--

4 fluid oz. bottle .....	\$1.00
--------------------------	--------

## “DOGZOFF”— Dog Repellent — “Scram”

Safeguards Evergreens, Shrubs, Flowers, Trees, etc. Corrects dog's bad habits. Frees gardens of nuisances. Easily applied. An effective repellent for mice, rabbits, etc. Cats do not like Dogzoff--can be used as protection for birds. 3-oz. bottle or package.....\$ .60

## “BUG-GETA”— Kills slugs, snails, cutworms

1-pound package.....	\$ .35
----------------------	--------

## VITAMIN B-1..... 25¢ and \$1.00

Stimulates new root growth--fine for use in starting dormant trees and shrubs into active growth.

## Transplantone..... 25¢ and \$1.00

Reduces wilt in transplanting. Invigorates roots. Any successful planter should always have Vitamin B-1 or Transplantone on hand. If stock shows signs of wilt, or is not growing properly--add B-1 or Transplantone according to directions. One half cent will often save a \$25.00 tree or shrub.

**Tree Protectors**—heavy treated cardboard 7" x 18" --wired top and bottom for tying. These protectors guard against rodent injury, also protect tree from sunscald-winter injury, etc. Price .04 each, \$3.50 per hundred.

# Columbia & Kanogan

## NURSERY COMPANY

("The Wenatchee Nurseries")

2nd and Mission Sts.,

Phone 294

WENATCHEE, WASHINGTON

ESTABLISHED IN 1906

---

---

### Owners and Management of "C & O"

W. D. Plough, President - with "C&O" since 1925  
J. A. Snyder, Vice President - with "C&O" since 1910  
Gordon W. Plough, Sec'y-Treas. - with "C&O" since 1943  
W. E. Hawley, Landscape Architect  
Geo. Van Well, Field Superintendent  
Willard Gossman, Superintendent in charge of growing  
ornamentals.

### Some of Our Large Plantings

of ornamentals, shade trees and lawns include Grand Coulee Dam, the world's largest man-made structure, Farragut Naval station, Farragut, Idaho, Washington State Capitol, at Olympia, government housing projects at Bremerton, Seattle and Renton, Washington.

### We Grow Lots of Fruit

in connection with our nursery we operate more than 100 acres and this season (1948) we will ship from these orchards many tons of choice fruit, including Riland Apricots, Bing and Lambert Cherries, Redelberta, Candoka and Herb Hale Peaches--500 tons of Bartlett and early bearing Anjou Pears--5,000 boxes of Blackjon Apples, 10,000 boxes of Richared and Shotwell Delicious Apples, also SeeandO Red Romes, SeeandO Winesap and many other varieties. This past spring we planted more than 2000 fruit trees on newly acquired land, added to our orchard.

### An Ideal Climate for Nursery Stock

is found in the fertile Wenatchee valley, where stock grows rapidly. The warm, dry summers, together with controlled irrigation and moderately cold winters, combine to make an unsurpassed finished product. Many Eastern Nurseries know this and have a large part of their stock grown in the state of Washington.

### "C & O" Orchards from Coast to Coast

We grow thousands of fruit trees for planters from California to Maine, and some of the country's largest orchards are "C & O" grown. You will be pleased with our Northern grown hardy stock.